

A60C Low Voltage Capacitor Fuses

600V Low Voltage Capacitor Fuses

Mersen low voltage capacitor fuses provide advanced safety for power correction and harmonic filtering equipment. A capacitor fuse isolates a shorted capacitor before it can damage surrounding equipment or personnel. Typical capacitor failures occur when the internal dielectric can no longer withstand the applied voltage, resulting in a low impedance current path and generating excessive heat and pressure that can cause violent case rupture. Mersen low voltage capacitor fuses will isolate the shorted capacitor before case rupture occurs while routinely withstanding inrush current at startup.

Features/Benefits:

- High interrupting rating
- Current-limiting
- Capacitor inrush withstand capability
- Direct mount
- Optional blown fuse indication

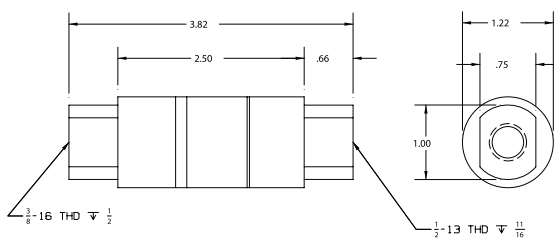
Catalog Numbers (amps)

| Without indicator | With indicator |
|-------------------|----------------|
| A60C10-121 | - |
| A60C15-121 | - |
| A60C20-121 | - |
| A60C25-121 | A60C25-121TI |
| A60C30-121 | - |
| A60C35-121 | A60C35-121TI |
| A60C40-121 | A60C40-121TI |
| A60C50-121 | A60C50-121TI |
| A60C60-121 | A60C60-121TI |
| - | A60C75-121TI |
| A60C80-121 | A60C80-121TI |
| A60C100-121 | A60C100-121TI |
| A60C125-121 | A60C125-121TI |
| A60C150-121 | A60C150-121TI |
| A60C175-121 | A60C175-121TI |
| A60C200-121 | A60C200-121TI |
| A60C225-121 | A60C225-121TI |
| A60C250-121 | A60C250-121TI |
| A60C300-121 | A60C300-121TI |

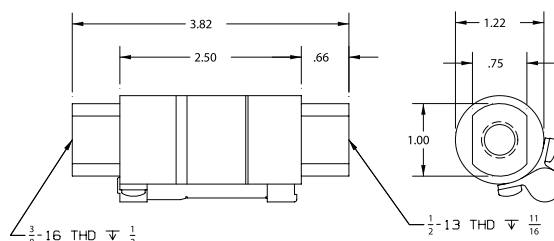
Ratings:

Volts : 600VAC
Amps : 10 to 300A
IR : 200kA I.R.

Dimensions



A60C without Indicator



A60C with Indicator

Approvals:

- UL Recognized Component File E60314
- Tested by UL to CSA standard C22.2 No. 248.1

