

A150X Amp-Trap® Form 101

A150X Amp-Trap® Form 101 Semiconductor Protection fuses, rated up to 1000A, 1500VAC are suitable for traction drive and auxiliary circuits and for High Voltage Heavy duty rectifier applications. A150X fuses are suitable for use up to 1500VDC on circuits depending on time constant.

Features/Benefits:

- 1500V AC rated for wide range of applications
- Heavy duty links
- Rugged fiberglass body

Highlights:

- Fast acting
- Current limiting
- Low I^2t

Applications:

- Protection of traction drive and auxiliary circuits, etc.



Ratings:

Volts : 1500VAC
 : 1000VDC
Amps : 1A to 1000A
I.R. : 100kA I.R. AC
 : 100kA I.R. DC

Approvals:

- Self-certified

Catalog Numbers (amps)

Catalog No.	Dimen. Fig.	Catalog No.	Dimen. Fig.
A150X1-1	1	A150X90-4	2
A150X15-1	1	A150X100-4	2
A150X15-4	2	A150X125-4	2
A150X20-1	1	A150X150-4	2
A150X20-4	2	A150X175-4	2
A150X25-4	2	A150X200-4	2
A150X30-1	1	A150X250-4	2
A150X30-4	2	A150X300-4	2
A150X35-4	2	A150X400-4	2
A150X40-4	2	A150X450-4	2
A150X50-4	2	A150X500-4	2
A150X60-4	2	A150X600-4	2
A150X70-4	2	A150X800-4	2
A150X80-4	2	A150X1000-4	2

Dimensions

Outline Ref.	Mounting Type	Fig.	Dimensions - Inches (mm)											
			A	B	C	D	E	F	G	H	J			
A150X1 to 30	1	1	6.13 (155.7)	.82 (20.8)										
A150X15 to 60	4	2	7.15 (182)	1.21 (31)	5.62 (143)	6.46 (164)	6.34 (161)	0.31 (8)	1.00 (25)	0.18 (3)	-			
A150X70 to 100	4	2	7.87 (200)	1.50 (38)	5.62 (143)	6.93 (176)	6.31 (160)	0.40 (10)	1.00 (25)	.025 (6)	-			
A150X125 to 300	4	2	7.87 (200)	2.00 (51)	5.62 (143)	6.93 (176)	6.31 (160)	0.40 (10)	1.50 (38)	0.25 (6)	-			
A150X400 to 600	4	2	9.75 (248)	2.50 (64)	6.62 (168)	8.31 (211)	8.06 (205)	0.56 (14)	2.00 (51)	0.25 (6)	-			
A150X800 to 1000	4	3	9.87 (251)	3.50 (89)	6.12 (155)	8.03 (204)	7.71 (196)	0.56 (14)	2.75 (70)	0.37 (9)	1.37 (35)			

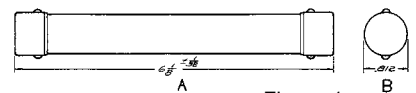


Figure 1

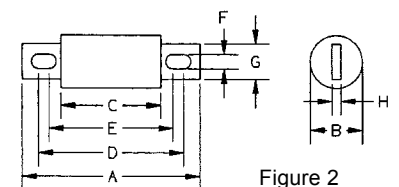


Figure 2

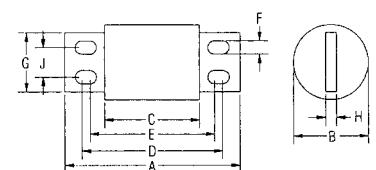


Figure 3