

# Open Style PDBs 62000-69000

## Versatile Power Distribution Blocks for cable terminations

Mersen Power Distribution Blocks afford a safe, convenient way of splicing cables, splitting primary power into a variety of secondary circuits or providing a fixed junction tap-off point. Power block options include single or dual primary connections with up to 30 secondary connections.

### Features/Benefits:

- **Adder Poles**

All series have optional adder poles which snap onto the 1, 2 or 3- pole blocks and lock together to form as many poles as required. Adder poles with a variety of terminations can be combined to match special wire size combinations.

- **Wire Connectors**

Standard aluminum box connectors accommodate aluminum or copper wire, 1 conductor per opening. Standard copper box connections are for copper wire only, 1 conductor per opening. Connectors are all 1 piece and tin plated.

- **Insulators**

Insulators are virtually unbreakable, glass-filled polycarbonate on all series. "See-through" safety covers are available, which give greater safety and provide service entrance ratings for large and intermediate series blocks.

### Highlights:

- **Mini** - 62000 and 63000 Series
- **Intermediate** - 66000 and 67000 Series
- **Large** - 68000 and 69000 Series

### Applications:

- Box, stud and quick-connect terminations for copper and/or aluminum cables



### Ratings:

**Volts** : 600V

**Amps** : 90 to 2660A

**SCCR** : 100kA with proper fuse.

Contact technical services for sizing table.

### Approvals:

- Most sizes are UL Recognized Component -Guide XCFR2, File E73571
- Most sizes are CSA Certified:
  - Series 62, 63, 66, 68 - Class 6228, File 69363
  - Series 67, 69 - Class 3211, File 15469



# Large 68000-69000 Series

## Catalog Numbers - 68000 and 69000 Series

Ampere rating based on NEC Table 310-16 for 75°C copper wire.

Primary		Secondary		Ampere Rating (A)	Aluminum				Copper				Short Circuit Current Rating
Wire Range AWG/kcmil or Stud Size	Openings or Studs per Pole	Wire Range AWG/kcmil or Stud Size	Openings or Studs per Pole		Adder	1-Pole	2-Pole	3-Pole	Adder	1-Pole	2-Pole	3-Pole	
350-#6	1	2/0-#14	6	310	69170	69171	69172	69173	68170	68171	68172	68173	100kA*
		#4-14	12		69150	69151	69152	69153	68150	68151	68152	68153	100kA*
		#10-14*	20		69630**	69631**	69632**	69633**	68630**	68631**	68632**	68633**	
500-#4	1	500-#4	1	380	69050	69051	69052	69053	68050	68051	68052	68053	100kA*
		350-#6	2		69060	69061	69062	69063	68060	68061	68062	68063	100kA*
		4/0-#6	4		69510**	69511**	69512**	69513**	-	-	-	-	
		4/0-#10	4		-	-	-	-	68510**	68511**	68512**	68513**	
		2/0-#14	6		69070	69071	69072	69073	68070	68071	68072	68073	100kA*
		#4-14	12		69080	69081	69082	69083	68080	68081	68082	68083	100kA*
600-#2	1	600-#2	1	420	69640	69641	69642	69643	68640	68641	68642	68643	100kA*
1000-250	1	1000-250	1	545	69000	69001	69002	69003	68000	68001	68002	68003	100kA*
		500-#4	2		69010	69011	69012	69013	68010	68011	68012	68013	100kA*
		350-#6	2		69020	69021	69022	69023	68020	68021	68022	68023	100kA*
		4/0-#6	4		69300**	69301**	69302**	69303**	-	-	-	-	
		4/0-#10	4		-	-	-	-	68300**	68301**	68302**	68303**	
		2/0-#14	6		69030	69031	69032	69033	68030	68031	68032	68033	100kA*
		#2-14	10		69530**	69531**	69532**	69533**	68530**	68531**	68532**	68533**	
#4-14	12	69040	69041	69042	69043	68040	68041	68042	68043	100kA*			
#4-14	2	#4-14	12	170	69180	69181	69182	69183	68180	68181	68182	68183	100kA*
2/0-#14	2	#4-14	12	350	69160	69161	69162	69163	68160	68161	68162	68163	100kA*
		#10-14*	20		69600	69601	69602	69603	68600	68601	68602	68603	100kA*
350-#6	2	350-#6	2	620	69120	69121	69122	69123	68120	68121	68122	68123	100kA*
		4/0-#6	4		69320**	69321**	69322**	69323**	-	-	-	-	
		4/0-#10	4		-	-	-	-	68320**	68321**	68322**	68323**	
		2/0-#14	6		69130	69131	69132	69133	68130	68131	68132	68133	100kA*
500-#4	2	#4-14	12	760	69140	69141	69142	69143	68140	68141	68142	68143	100kA*
		500-#4	2		69090	69091	69092	69093	68090	68091	68092	68093	100kA*
		4/0-#6	4		69310	69311	69312	69313	-	-	-	-	
		4/0-#10	4		-	-	-	-	68310	68311	68312	68313	100kA*
		2/0-#14	6		69100	69101	69102	69103	68100	68101	68102	68103	100kA*
600-#2	2	600-#2	2	840	69650	69651	69652	69653	-	-	-	-	
		#14.4 & 3/0-#10	4		69540	69541	69542	69543	68540**	68541**	68542**	68543**	
1000-250	2	500-#4	4	1090	-	69561**†	-	-	-	68561**†	-	-	
600-#2	3	600-#2	3	1260	-	69331**†	-	-	-	-	-	-	
500-#4	4	#6-14	30	1520	-	69191**†	-	-	-	68191**†	-	-	
		#6-14 & 2/0-#14	22		-	69521**†	-	-	-	68521**†	-	-	
		2/0-#14	4		-	69341**†	-	-	-	-	-	-	
600-#2	4	600-#2	4	1680	-	69341**†	-	-	-	-	-		
500-#4	3	4/0-#10	6	1140	-	-	-	-	-	800011**†	-	-	
500-#4	7	500-#4	7	2660	-	-	-	-	-	800061***	-	-	
500-#4	3	2/0-#14	8	1140	-	900061**†	-	-	-	-	-	-	
500-#4	4	500-#4	4	1520	-	900071**†	-	-	-	800031**†	-	-	
500-#4	4	2/0-#12	6	1050	-	900121†	-	-	-	800121**†	-	-	

\*Copper wire only

\*\*Not UL Recognized or CSA Certified

\*\*\*These pole blocks are triple width (7.81")

†These 1 pole blocks are double width (5.31")

\*Short Circuit current rating with correctly sized fuse 100kA. Contact Mersen technical services for fuse type and maximum ampere required.

# Aluminum connectors are rated for 90° C Cu/AL wire, copper connectors are rated for 75° C Cu wire.



# Large 68000-69000 Series

## Catalog Numbers - 68000 and 69000 Series (Continued)

Ampere rating based on NEC Table 310-16 for 75°C copper wire.

Primary		Secondary		Ampere Rating (A)	Aluminum				Copper			
Wire Range AWG/kcmil or Stud Size	Openings or Studs per Pole	Wire Range AWG/kcmil or Stud Size	Openings or Studs per Pole		Adder	1-Pole	2-Pole	3-Pole	Adder	1-Pole	2-Pole	3-Pole
<b>Box to Stud</b>												
500-#4	1	3/8-16 x 1	1	Cu 380	69210	69211	69212	69213	68210	68211	68212	68213
			2	Al 310	69270	69271	69272	69273	68270	68271	68272	68273
500-#4	2	3/8-16 x 1	2	Cu 380	-	69221	69222	69223	-	-	-	-
			2	Al 310	-	-	-	-	-	-	-	-
1000-250	1	1/2-13 x 1-3/16	1	Cu 545	69280	69281	69282	69283	68280	68281	68282	68283
		3/8-16 x 1	2	Al 445	69240	69241	69242	69243	68240	68241	68242	68243
1/2-13 x 1	1	2/0-#14	4	545	69260	69261	69262	69263	-	-	-	-
		#4-14	12	545	69290	69291	69292	69293	-	-	-	-
		2/0-#14	4	1000	-	-	-	-	68260	68261	68262	68263
		#4-14	12	1000	-	-	-	-	68290	68291	68292	68293
500-#4	4	3/8-16 x 1	4	1520	-	900091†	-	-	-	-	-	
<b>Stud to Stud</b>												
1/2-13 x 1-3/8	1	1/2-13 x 1-3/8	1	400	-	-	-	-	68220**	68221**	68222**	68223**

\*Stud type connectors are furnished with nuts and washers. Recommended stud torque: (3/8-16) - 228 in.-lbs; (1/2-13) - 496 in.-lbs.

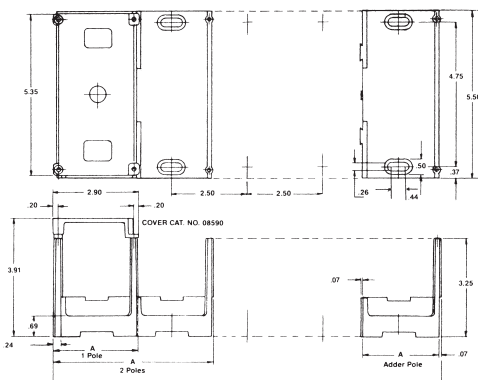
\*\*Not UL Recognized or CSA Certified

† These 1 pole blocks are double width (5.31")

# Aluminum connectors are rated for 90° C Cu/AL wire, copper connectors are rated for 75° C Cu wire.



## Dimensions – 68000 and 69000 Series Power Distribution Blocks

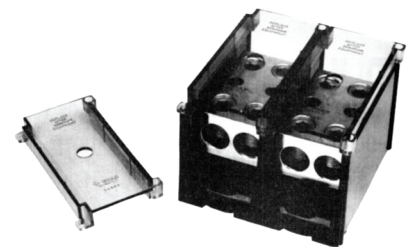


Number of Poles	Dimension A (Inches)
Adder	2.50
1	2.81
2	5.31
3	7.81
N	(2.50 x N) + .31

Example for 10 poles:  
 $A = (2.50 \times 10) + .31 = 25.31$  inches

### Safety Cover - Catalog No. 08590

Polycarbonate safety covers provide dead-front protection to 68000 and 69000 series power distribution blocks. One cover is needed for each pole (1-pole block requires 1 cover, 3-pole requires 3 covers, etc.) Each cover has a test probe hole in the center for circuit checking and each is marked with the reminder "REPLACE AFTER SERVICING EQUIPMENT". Mounting screws are supplied with cover. To order, simply determine the total number of poles to be protected and specify the same number of 08590 safety covers. Recommended mounting screws for all 68000-69000 series: 1/4" (.250 dia.). For double wide blocks use 08592W safety cover.



08590 cover and 69092 PDB with 2-08590 covers installed

### End Barrier - Catalog No. U09911

Polycarbonate end barriers snap on to PDB Adder blocks to form 1-pole blocks. Use one barrier per block.